
New Zealand Brass Band Championships 2026 Wellington



Brass Band Championships 2026 - Wellington

- World class venues – central and in close proximity
- Central NZ location – accessible for all bands
- Flights in/out from across the domestic network, and accessible with links to International flights for in-coming bands from overseas
- Over 485 accommodation properties, with budgets to suit everyone
- Easy options for rehearsal including over 100 schools and churches
- More eateries per capita than New York City – bars, restaurants, cafes, breweries and distilleries, all in the CBD
- Experienced organising committee
- Support from the Mayor, City Council, and WellingtonNZ



Venues

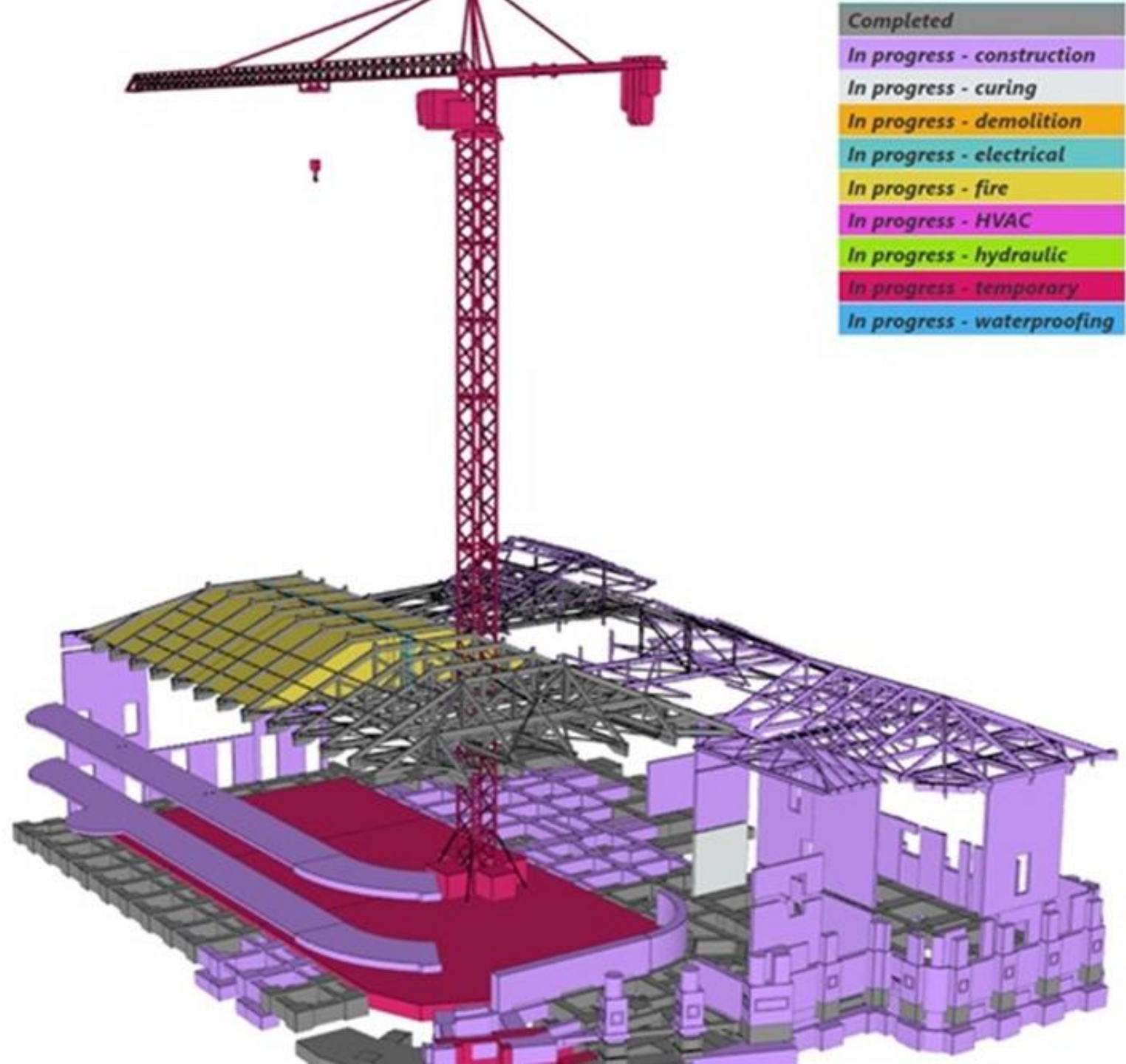
Michael Fowler Centre

Wellington Town hall

Michael Fowler Centre and Wellington Town Hall

- MFC Seats 2,400, Wellington Town Hall 1,350
- 2 band venues side by side at a central CBD location
- Modern concert halls – home of the NZSO
- World class acoustics
- Excellent backstage flow
- Ample warm up rooms
- Modern facility for supporters, public
- Close to a large selection of hotels, restaurants, eateries and bars

Town Hall Redevelopment



Town hall redevelopment

- Wellington Town Hall is currently undergoing earthquake strengthening and full refurbishment
- Initially scheduled to reopen early 2025 – there is now some uncertainty due to increased costs
- In case the venue is not ready to open in time for July 2026 there are excellent options for back-up venues including the Wellington Opera House and St James Theatre – both within easy walking distance of MFC

Solo and Ensemble Venues

- National Music Centre within the refurbished Wellington Town Hall
- 6 venue spaces within the complex
- Central CBD Location
- Back up venues : Te Whaea, NZ School of Drama & Dance
Te Papa, Museum of New Zealand



Street March
Wellington waterfront around Te Papa

Street March

- The Street March will follow the same route as used in 2017
- Two changes of direction, both right hand turns
- Main straight is approximately 230m
- Waterfront march around Te Papa, Museum of New Zealand
- No road closures required
- WCC will support set-up and event management

Accommodation



Accommodation

- Wellington has an abundance of hotel, motel, air b&b and hostel accommodation, to suit all budgets
- At time of writing...
 - 6 x Backpackers in the CBD, with rates from \$45/night
 - 77 x unrated properties with a range of rates
 - 99 x 3-Star Hotels, each with 50-100 rooms from \$65-200/night
 - 300 x 4-Star Hotels, each with 75-200 rooms, from \$125-250/night
 - 6 x 5-Star hotel with 125-150 rooms, \$190-500+/night
- New accommodation properties opening every year

Rehearsal Spaces

Within the region, Wellington has approximately:

- 80 schools, high schools and colleges with halls and auditoriums
- 95 churches with halls
- 20+ Community centres/halls run by the Wellington City Council

Some hotels have function rooms suitable for band rehearsal

Other options include Victoria School of Music, Student Halls, community theatres, clubs and society spaces

Eating and drinking

- Wellington is famous for its hospitality venues
- More eateries per capita than New York City – 697 food outlets
- Cafes, fast food, food courts, street vendors, bars, restaurants (casual, smart casual & fine dining)
- Coffee brewers, beer brewers and distilleries
- Food and drink outlets will be available at solo/ensemble and band venues
- There will be no shortage of places to eat and drink

Experienced
organising
committee and
volunteers



Organising Committee

- Mike Sander, chair of previous national contest committees
- Aaron Lloyd, president of Wellington District Brass Bands Association
- Committee made up of experienced bandspeople and members of previous organising committees
- Members, supporters, associates of bands from the Wellington District to assist
- Large pool of volunteers to ensure the smooth running of the championships

Enhancing our National Championship

We would be excited to explore opportunities to enhance the contest experience for competitors and for the Wellington musical community

- Potential for masterclasses and seminars from Wellington's professional musicians
- Involvement of local composers
- Youth focus, making it easier for more youth bands to compete
- Domestic promotion – encouraging every band from NZ to attend
- International promotion – potential to attract bands from Australia, Pacific, Europe, UK, Asia and USA
- Possibility of non-competitive events, such as new music workshop, Sunday afternoon concert

Indicative Contest Budget

• Income	Venue Grant (WCC)	\$25,000	Expenditure	Venue Hire	\$55,000
	Street March (WCC)	\$10,000		Street March	\$10,000
	Grant Funders	\$35,000		Advertising	\$10,000
	Sponsorships	\$15,000		General	\$5,000
	Advertising	\$5,000		Contingency	<u>\$10,000</u>
	Ticketing	\$15,000			
	Other Income	<u>\$3,000</u>			
	TOTAL INCOME	\$108,000		TOTAL EXPENDITURE	\$90,000

Surplus \$18,000, on 60/40 split gives the BBANZ \$10,800 profit share

We look forward
to seeing you in
Wellington in
2026

